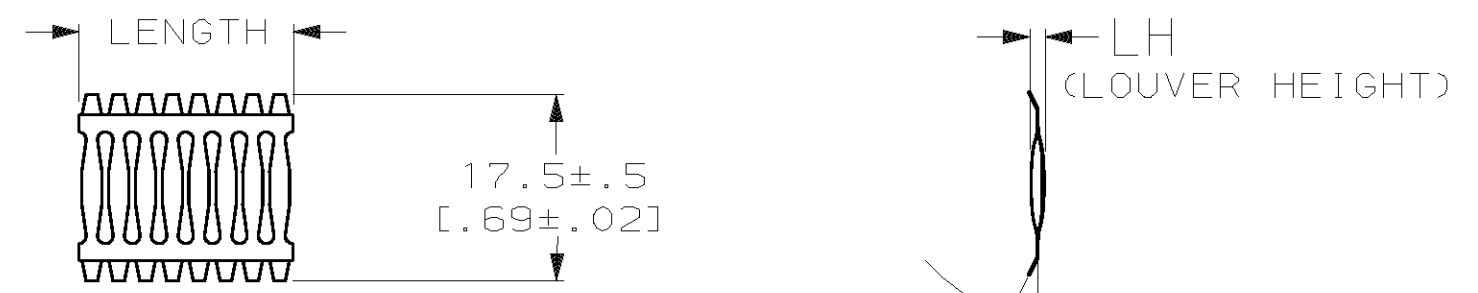


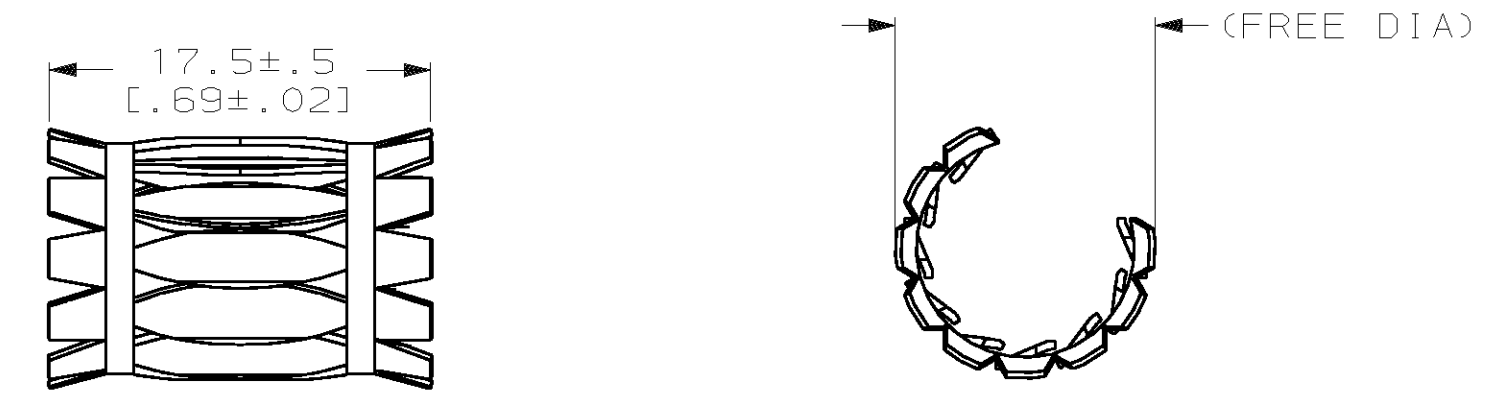
THIS DRAWING IS UNPUBLISHED. RELEASED FOR PUBLICATION, 19 .  
 © COPYRIGHT 19 BY AMP INCORPORATED. ALL INTERNATIONAL RIGHTS RESERVED.

LOC	DIST	P	F	ZONE	LTR	DESCRIPTION	DATE	APPD
FT	0							
					E	REVISE PER ECN 0G3B-0046-01	14FEB01	SU/GS
					F	REVISED EC 0G3B-0264-01	12JUL01	GS
					G	REVISED EC 0G3B-0082-02	16DEC02	GS

(FREE DIA)	LH	STYLE	T°	MATING PIN Ø REF	NUM LOUV	PLATING	MAT'L NOTE	MAT'L THK	REF	PART NUMBER
[.45]	[.050]	A	15	9.01 [.355]	117-2	12	0.15 [.006]	01210	5-192013-0	
[.52]	[.046]	A	15	8.97 [.353]	13UNPL	12	0.08 [.003]	01126	4-192013-9	
[.42]	[.050]	A	15	7.92 [.312]	10UNPL	13	0.15 [.006]	01116	4-192013-8	
[.42]	[.052]	A	15	7.92 [.312]	107-2	12	0.20 [.008]	01118	4-192013-7	
[.42]	[.050]	A	15	7.92 [.312]	106-2	12	0.15 [.006]	01217	4-192013-6	OBSOLETE
[.42]	[.050]	A	15	7.92 [.312]	107-2	12	0.15 [.006]	01117	4-192013-5	
[.42]	[.050]	A	15	7.92 [.312]	10UNPL	12	0.15 [.006]	01266	4-192013-4	
[.42]	[.050]	A	15	7.92 [.312]	107-2	12	0.10 [.004]	01281	4-192013-3	
		C	15	--	877-2	12	0.15 [.006]	01030	4-192013-2	OBSOLETE
[1.48]	[.052]	A	45	31.8 [1.250]	397-2	12	0.20 [.008]	01219	4-192013-1	
[1.48]	[.052]	A	45	31.8 [1.250]	39UNPL	12	0.20 [.008]	01218	4-192103-0	
[1.48]	[.050]	A	45	31.8 [1.250]	397-2	12	0.15 [.006]	01209	3-192013-9	
[1.45]	[.050]	A	45	30.1 [1.187]	387-2	12	0.15 [.006]	01193	3-192013-8	
[1.21]	[.050]	A	45	26.2 [1.032]	337-2	12	0.15 [.006]	01214	3-192013-7	
[1.15]	[.050]	A	45	25.0 [.984]	317-2	12	0.15 [.006]	01319	3-192013-6	
[1.02]	[.050]	A	45	21.6 [.850]	277-2	12	0.15 [.006]	01208	3-192013-5	
[1.05]	[.050]	A	45	21.4 [.842]	287-2	12	0.15 [.006]	01165	3-192013-4	
[.92]	[.052]	A	45	19.1 [.750]	247-2	12	0.20 [.008]	01300	3-192013-3	
--	[.050]	C	45	--	555-2	12	0.15 [.006]	01041	3-192013-2	
--	[.050]	C	45	--	55UNPL	12	0.15 [.006]	01044	3-192013-1	
									3-192013-0	OBSOLETE
--	[.050]	C	15	--	487-2	12	0.15 [.006]	01043	2-192013-9	
--	[.050]	C	15	--	417-2	12	0.15 [.006]	01027	2-192013-8	
--	[.050]	C	15	--	417-2	12	0.10 [.004]	01028	2-192013-7	
--	[.050]	C	15	--	407-2	12	0.15 [.006]	01243	2-192013-6	OBSOLETE
--	[.050]	C	15	--	407-2	12	0.10 [.004]	01047	2-192013-5	
--	[.050]	C	45	--	357-2	12	0.15 [.006]	01033	2-192013-4	
--	[.050]	C	15	--	357-2	12	0.15 [.006]	01032	2-192013-3	
--	[.050]	C	15	--	357-2	12	0.10 [.004]	01299	2-192013-2	
									2-192013-1	OBSOLETE
									2-192013-0	OBSOLETE
--	[.050]	C	15	--	337-2	12	0.15 [.006]	01026	1-192013-9	
--	[.050]	C	15	--	337-2	12	0.10 [.004]	01025	1-192013-8	
									1-192013-7	OBSOLETE
		C	15	--	207-2	12	0.15 [.006]	01035	1-192013-6	OBSOLETE
--	[.050]	C	15	--	194	12	0.15 [.006]	01051	1-192013-5	
		C	15	--	197-2	12	0.15 [.006]	01031	1-192013-4	OBSOLETE
--	[.050]	C	15	--	177-2	12	0.15 [.006]	01059	1-192013-3	
--	[.050]	C	15	--	147-2	12	0.15 [.006]	01053	1-192013-2	
--	[.050]	C	15	--	134	12	0.15 [.006]	01065	1-192013-1	
--	[.050]	C	15	--	137-2	12	0.15 [.006]	01077	1-192013-0	
--	[.050]	C	15	--	127-2	12	0.15 [.006]	01055	192013-9	
									192013-8	
OBSOLETE									192013-7	
--	[.050]	C	15	--	121-3	12	0.10 [.004]	01069	192013-6	
--	[.050]	C	15	--	117-2	12	0.15 [.006]	01057	192013-5	
--	[.050]	C	15	--	104	12	0.15 [.006]	01056	192013-4	
--	[.050]	C	15	--	107-2	12	0.15 [.006]	--	192013-3	
--	[.050]	C	15	--	101-2	12	0.10 [.004]	01046	192013-2	
--	[.050]	C	15	--	97-2	12	0.15 [.006]	01081	192013-1	
--	[.050]	C	15	--	57-2	12	0.15 [.006]	01045	192013-0	



STYLE C  
(STRIP)



STYLE A  
(FEMALE)

1. FINISH-GOLD PLATE 2.03-2.54 μm [80-100 μ"] THICK.
2. FINISH-NICKEL PLATE 1.02-2.03 μm [40-80 μ"] THICK.
3. FINISH-NICKEL PLATE 1.27-1.91 μm [50-75 μ"] THICK.
4. FINISH-TIN PLATE 7.62-15.24 μm [300-600 μ"] THICK.
5. FINISH-SILVER PLATE 18.78 μm [700-1000 μ"] THICK.
6. FINISH-GOLD PLATE 0.25-0.51 μm [10-20 μ"] THICK.
7. FINISH-SILVER PLATE 5.08-10.16 μm [200-400 μ"] THICK.
- 8.
- 9.
- 10.
11. PLATING NOTES ARE TO BE INTERPRETED AS FOLLOWS:  
5-7 AS 5 OVER 7.
12. MATERIAL-CDA172 BeCu.
13. MATERIAL-STAINLESS STEEL.

DO NOT SCALE PRINT. UNLESS SPECIFIED DIMENSIONS IN mm [INCHES] TOLERANCES ON: 1 PLC DEC ± 0.5 [.02] 2 PLC DEC ± 0.25 [.010] ANGLES ± -	DR RA JAYNE 07-01-91	AMP Incorporated Harrisburg, PA 17105-3608	
	CHK G. STEINHAUER 07-01-91		
MATERIAL  SEE TABLE	APPD G. STEINHAUER 07-01-91	NAME	
	APPD RA JAYNE 07-01-91	CONTACT BAND, FEMALE	
FINISH  SEE TABLE	APPLICATION SPEC	SIZE C	CAGE CODE 00779
		SCALE NTS	DRAWING NO 192013
	WEIGHT		SHEET 1 OF 2

THIS DRAWING IS UNPUBLISHED. RELEASED FOR PUBLICATION ,19 .  
 © COPYRIGHT 19 BY AMP INCORPORATED. ALL INTERNATIONAL RIGHTS RESERVED.

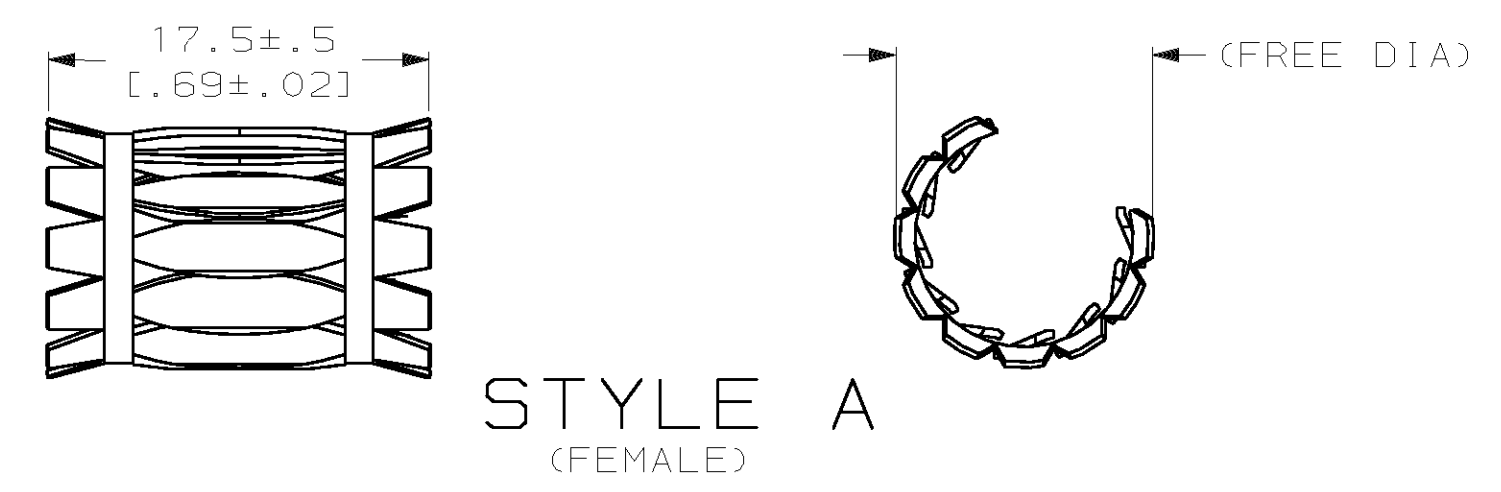
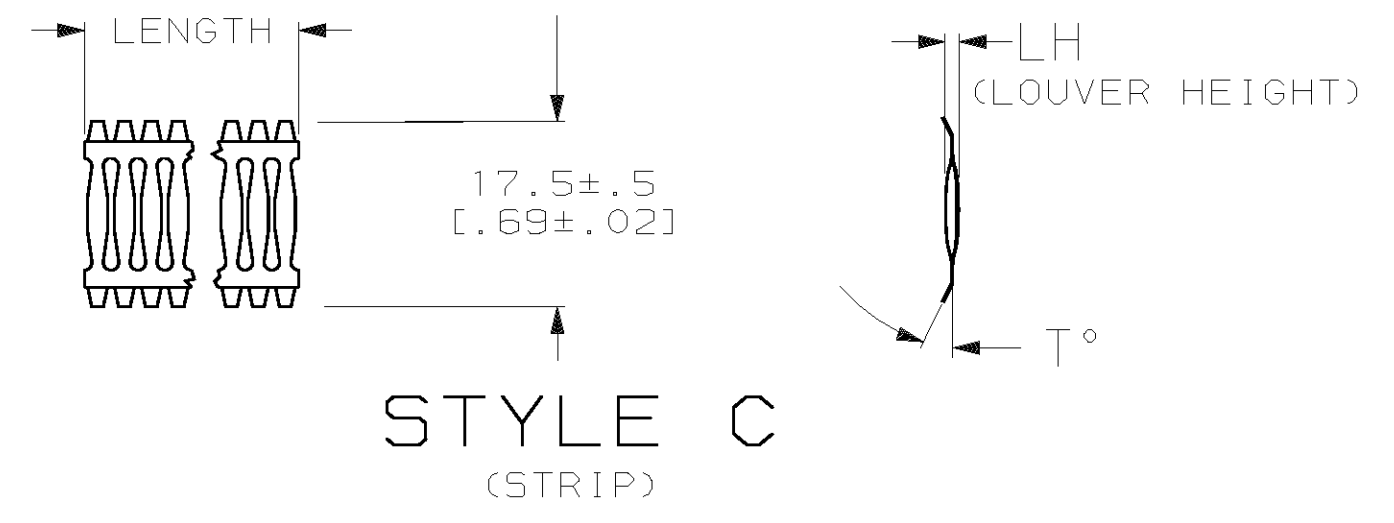
LOC	DIST	P	F	ZONE	LTR	REVISIONS	DATE	APPD
FT	0				G	DESCRIPTION		
						SEE SHEET 1	-	-

(FREE DIA)	LH	STYLE	T°	MATING PIN Ø REF	NUM LOUV	PLATING	MAT'L NOTE	MAT'L THK	REF	PART NUMBER
[.89][.052]	A	15	19.1 [.750]	23	UNPL	12	0.20 [.008]	01248	9-192013-9	
[.92][.050]	A	15	19.1 [.750]	24	UNPL	13	0.15 [.006]	01203	9-192013-8	
[.92][.050]	A	15	19.1 [.750]	24	6-2	12	0.15 [.006]	01234	9-192013-7	
[.92][.050]	A	15	19.1 [.750]	24	7-2	12	0.15 [.006]	01154	9-192013-6	
[.92][.050]	A	15	19.1 [.750]	24	UNPL	12	0.15 [.006]	01152	9-192013-5	
[.89][.050]	A	15	19.1 [.750]	23	7-2	12	0.15 [.006]	01255	9-192013-3	
[1.75][.050]	A	15	19.1 [.750]	23	7-2	12	0.10 [.004]	01279	9-192013-2	
[.92][.046]	A	15	19.1 [.750]	24	7-2	12	0.08 [.003]	01151	9-192013-1	
[.92][.046]	A	15	19.1 [.750]	24	UNPL	12	0.08 [.003]	01297	9-192013-0	
[.85][.050]	A	15	17.4 [.685]	22	7-2	12	0.15 [.006]	01223	8-192013-9	
[.80][.052]	A	15	15.88 [.625]	20	7-2	12	0.20 [.008]	01245	8-192013-8	
[.80][.052]	A	15	15.88 [.625]	20	UNPL	12	0.20 [.008]	01289	8-192013-7	
[.76][.052]	A	15	15.88 [.625]	19	7-2	12	0.20 [.008]	01259	8-192013-6	
[.76][.052]	A	15	15.88 [.625]	19	UNPL	12	0.20 [.008]	01258	8-192013-5	
[.83][.050]	A	15	15.88 [.625]	21	7-2	12	0.15 [.006]	01207	8-192013-4	
[.80][.050]	A	15	15.88 [.625]	20	6-2	12	0.15 [.006]	01317	8-192013-3	
[.80][.050]	A	15	15.88 [.625]	20	7-2	12	0.15 [.006]	01148	8-192013-2	
[.76][.050]	A	15	15.88 [.625]	19	7-2	12	0.15 [.006]	01311	8-192013-1	
[1.50][.050]	A	15	15.88 [.625]	20	7-2	12	0.10 [.004]	01273	8-192013-0	
[.80][.050]	A	15	15.57 [.613]	20	7-2	12	0.15 [.006]	01202	7-192013-9	
[.73][.052]	A	15	14.27 [.562]	18	7-2	12	0.20 [.008]	01143	7-192013-8	
[.45][.050]	A	15	9.01 [.355]	11	UNPL	12	0.15 [.006]	--	7-192013-7	
[.73][.050]	A	15	14.0 [.551]	18	7-2	12	0.15 [.006]	01264	7-192013-6	
[.70][.050]	A	15	14.0 [.551]	17	7-2	12	0.15 [.006]	01141	7-192013-5	
[.69][.052]	A	15	12.7 [.500]	16	7-2	12	0.20 [.008]	01137	7-192013-4	
[.69][.052]	A	15	12.7 [.500]	16	UNPL	12	0.20 [.008]	01247	7-192013-3	
[.69][.050]	A	15	12.7 [.500]	16	UNPL	13	0.15 [.006]	01244	7-192013-2	
[.69][.050]	A	15	12.7 [.500]	16	7-2	12	0.15 [.006]	01206	7-192013-1	
[.69][.046]	A	15	12.7 [.500]	16	7-2	12	0.08 [.003]	01275	7-192013-0	
[.64][.052]	A	15	11.99 [.472]	15	7-2	12	0.20 [.008]	01304	6-192013-9	
[.55][.050]	A	15	11.99 [.472]	14	UNPL	13	0.15 [.006]	01073	6-192013-8	
[.64][.050]	A	15	11.99 [.472]	15	7-2	12	0.15 [.006]	01135	6-192013-7	
[.64][.050]	A	15	11.99 [.472]	15	UNPL	12	0.15 [.006]	01134	6-192013-6	
[1.25][.050]	A	15	11.99 [.472]	15	7-2	12	0.10 [.004]	01286	6-192013-5	
[.80][.050]	A	15	15.88 [.625]	20	UNPL	--	0.15 [.006]	--	6-192013-4	
[.67][.046]	A	15	12.7 [.500]	16	UNPL	--	0.08 [.003]	--	6-192013-3	
[.53][.050]	A	15	10.0 [.394]	13	UNPL	--	0.15 [.006]	--	6-192013-2	
[.55][.052]	A	15	11.1 [.437]	14	7-2	12	0.20 [.008]	01131	6-192013-1	
[.55][.050]	A	15	11.1 [.437]	14	UNPL	13	0.15 [.006]	01246	6-192013-0	
[.55][.050]	A	15	11.1 [.437]	14	7-2	12	0.15 [.006]	01211	5-192013-9	
[.55][.050]	A	15	11.02 [.434]	14	6-2	12	0.15 [.006]	01128	5-192013-8	
[.55][.050]	A	15	11.02 [.434]	14	UNPL	12	0.15 [.006]	01216	5-192013-7	
[.52][.050]	A	15	10.0 [.394]	13	6-2	12	0.15 [.006]	01272	5-192013-6	
[.52][.050]	A	15	10.0 [.394]	13	7-2	12	0.15 [.006]	01205	5-192013-5	
[.50][.050]	A	15	9.53 [.375]	12	7-2	12	0.15 [.006]	01124	5-192013-4	
[.48][.050]	A		9.53 [.375]	12	7-2	12	0.10 [.004]	01268	5-192013-3	
[.48][.052]	A	15	9.07 [.357]	12	7-2	12	0.20 [.008]	01122	5-192013-2	
[.45][.050]	A	15	9.01 [.355]	11	6-2	12	0.15 [.006]	01121	5-192013-1	

OBSOLETE

OBSOLETE

OBSOLETE (PENDING)



(FREE DIA)	LH	STYLE	T°	MATING PIN Ø REF	NUM LOUV	PLATING	MAT'L NOTE	MAT'L THK	REF	PART NUMBER
------------	----	-------	----	------------------	----------	---------	------------	-----------	-----	-------------

DO NOT SCALE PRINT. UNLESS SPECIFIED DIMENSIONS IN mm [INCHES] TOLERANCES ON : 1 PLC DEC ± 0.5 [.02] 2 PLC DEC ± 0.25 [.010] ANGLES ± -	DR RA JAYNE 07-01-91	AMP Incorporated Harrisburg, PA 17105-3608
	CHK G.STEINHAUER 07-01-91	
MATERIAL  SEE TABLE	APPD G.STEINHAUER 07-01-91	NAME
	APPD RA JAYNE 07-01-91	CONTACT BAND, FEMALE
SEE TABLE	PRODUCT SPEC -	SIZE
	APPLICATION SPEC -	CAGE CODE 00779
	WEIGHT -	DRAWING NO 192013
		SCALE -
		SHEET 2 OF 2